

# Quick Reference Guide

**Stichwortregister**

**Guide de référence rapide**

**Beknopte bedieningsgids**

**Guida di riferimento rapido**

**Guía de referencia rápida**

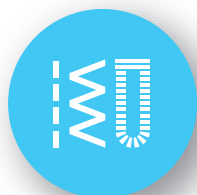
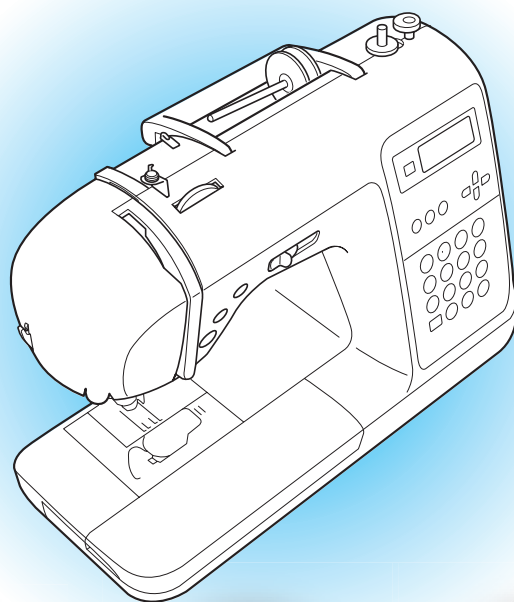
**Hurtigguide**

**Snabbstarts guide**

**Hurtig referenceguide**

**Pikaopas**

**Краткий справочник**



**Refer to the operation manual for detailed instruction.**

Ausführliche Hinweise finden Sie in der Bedienungsanleitung.

Reportez-vous au manuel d'instructions pour des informations détaillées.

In de bedieningshandleiding vindt u uitvoerige aanwijzingen.

Consultare il manuale d'istruzione per istruzioni dettagliate.

Consulte el manual de instrucciones para obtener información detallada.

Du finner nærmere informasjon i brukerhåndboken.

Detaljerede instruktioner finns i bruksanvisningen.

Se brugsanvisningen vedrørende en detaljeret vejledning.

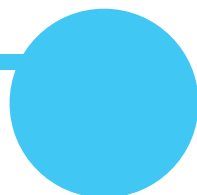
Käyttöohjeessa on yksityiskohtaisia lisätietoja.

Более подробная информация представлена в Руководстве по эксплуатации.

# Contents

Inhalt  
Inhoud  
Contenido  
Innehåll  
Sisällysluettelo

Table des matières  
Sommario  
Innhold  
Indhold  
Содержание



## Bobbin winding and setting

2

Aufspulen und Einsetzen der Unterfadenspule  
Spoel winden en installeren  
Colocación y devanado de la bobina  
Spola upp undertråd och sätta in spolen  
Puolaus ja asetus

Bobinage et réglage de la canette  
Avvolgimento e impostazione della spolina  
Innstillinger for og vikling av spoler  
Vinding og isætning af spolen  
Намотка и установка шпульки



## Upper threading

4

Einfädeln des Oberfadens  
Bovendraad inrijgen  
Enhebrado del hilo superior  
Trä övertråden  
Ylälangan pujotus

Enfilage supérieur  
Infilatura superiore  
Træ overtråden  
Trædning af overtråd  
Заправка верхней нити



## Selecting stitch patterns

6

Auswahl von Stichmustern  
Steekpatronen selecteren  
Selección de patrones de costura  
Välja mönster  
Ompeleen valinta

Sélection des motifs de point  
Selezione di disegni/punti  
Velge sømmønster  
Valg af stingmønstre  
Выбор рисунков строчек



## Combining and saving patterns

9

Kombinieren und Speichern von Mustern  
Patronen combineren en opslaan  
Combinación y almacenamiento de patrones  
Kombinera och spara mönster  
Kuvioiden yhdistely ja tallennus

Combinaison et enregistrement de motifs  
Combinazione e salvataggio di disegni  
Kombinere og lagre mønstre  
Kombinering og lagring af mønstre  
Сочетание различных рисунков строчек и сохранение в памяти



## Saved patterns' memo

10

Notizen für gespeicherte Muster  
Opgeslagen patronen  
Memoria de patrones guardados  
Kom ihåg för sparade mönster  
Tallennetut kuviot

Mémo des motifs enregistrés  
Promemoria disegni salvati  
Merknad om lagrede mønstre  
Liste over gemte mønstre  
Памятка для сохраненных рисунков

## Summary of stitch patterns

11

Übersicht der Stichmuster  
Overzicht van steekpatronen  
Resumen de patrones de costura  
Översikt över mönster  
Ompeleiden yhteenveto

Résumé des motifs de point  
Riepilogo disegni/punti  
Oppsummering av sømmønstre  
Oversigt over stingmønstre  
Рисунки строчек

# Bobbin winding and setting



Aufspulen und Einsetzen der Unterfadenspule  
 Spoel winden en installeren  
 Colocación y devanado de la bobina  
 Spola upp undertråd och sätta in spolen  
 Puolaus ja asetus

Bobinage et réglage de la canette  
 Avvolgimento e impostazione della spolina  
 Innstillinger for og vikling av spoler  
 Vinding og isætning af spolen  
 Намотка и установка шпульки

**Use only the included bobbin or bobbins of the same type.**

Verwenden Sie nur die im Lieferumfang enthaltene Spule oder Spulen vom selben Typ.

N'utilisez que la canette fournie ou une canette du même type.

Gebruik uitsluitend de bijgeleverde spoel of spoelen van hetzelfde type.

Utilizzare esclusivamente la spolina fornita o spoline dello stesso tipo.

Utilice sólo la bobina suministrada o bobinas del mismo tipo.

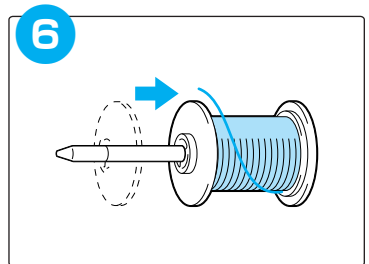
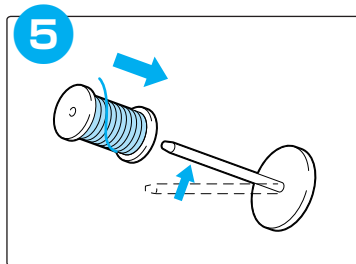
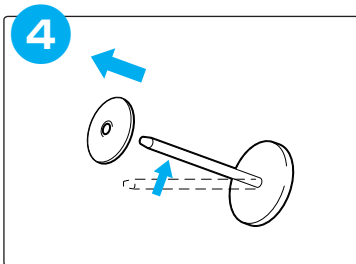
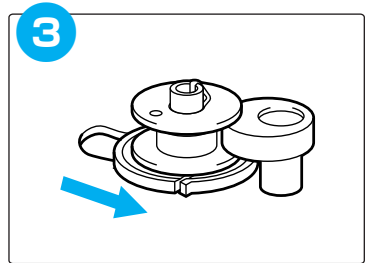
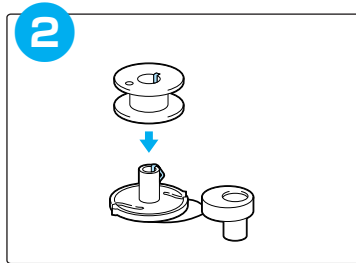
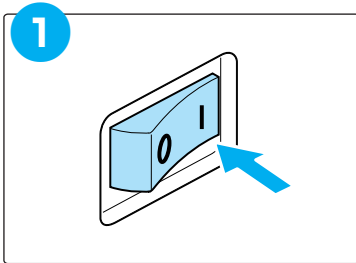
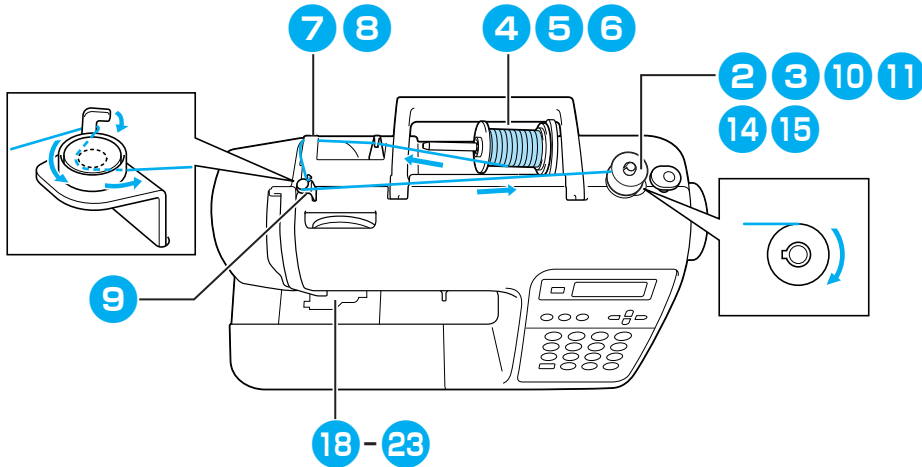
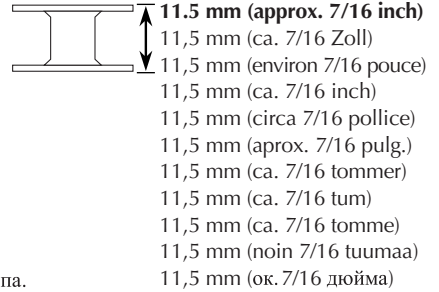
Brug kun spolen som leveres med maskinen, eller spoler af samme type som denne.

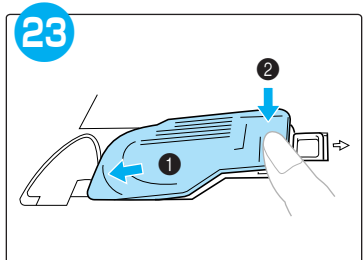
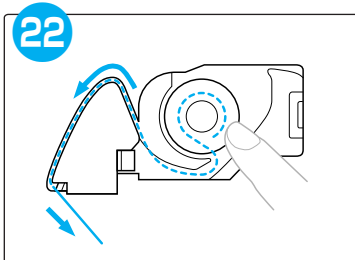
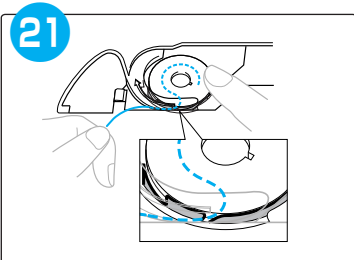
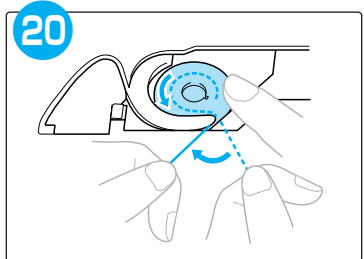
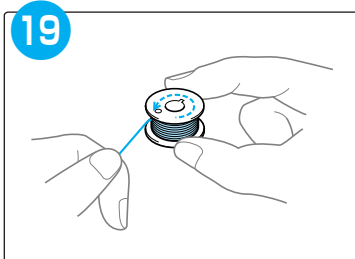
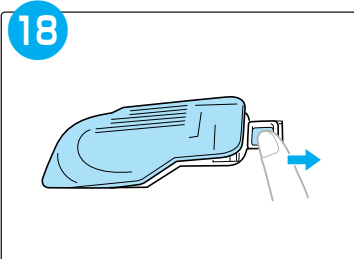
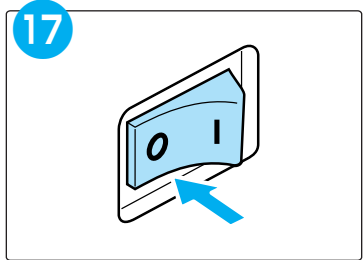
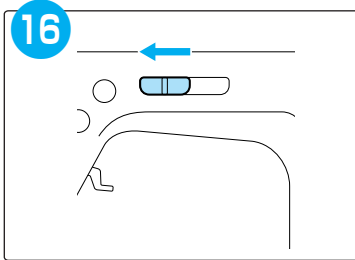
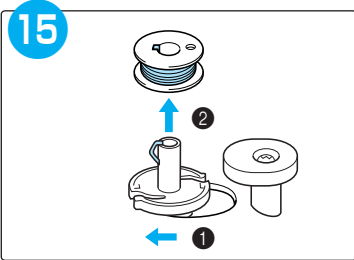
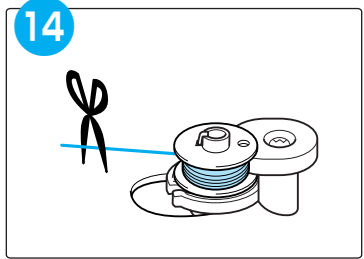
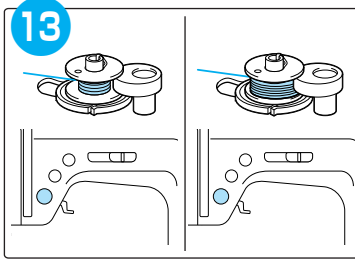
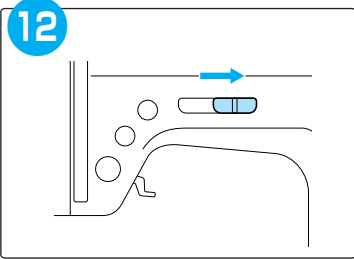
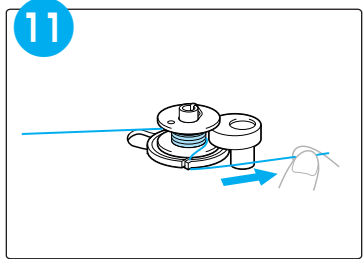
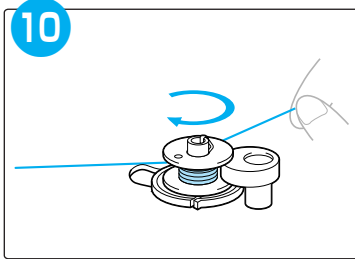
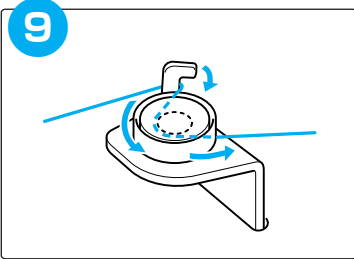
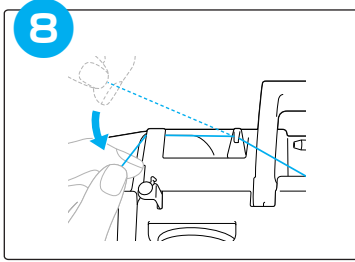
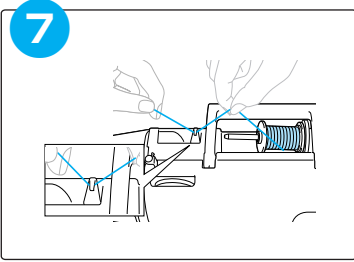
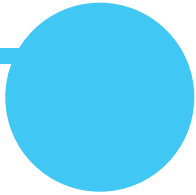
Använd bara spolen som medföljer eller spolar av samma typ.

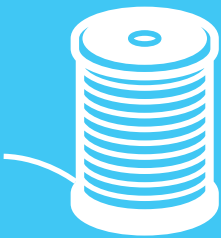
Brug kun den medfølgende spole eller spoler af samme type.

Käytä vain tämän ompelukoneen mukana toimitettuja puolia tai samantyyppisiä puolia.

Используйте только входящую в комплект шпульку или шпульки одного типа.



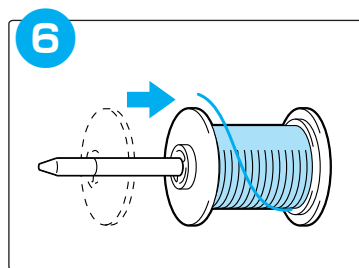
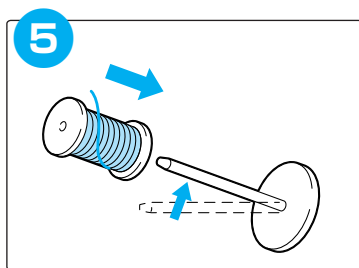
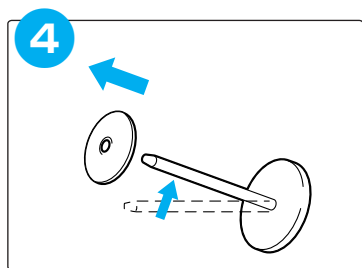
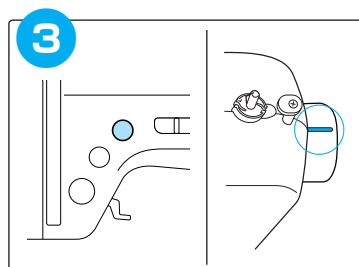
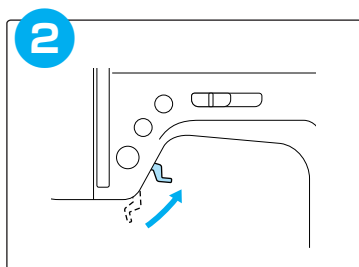
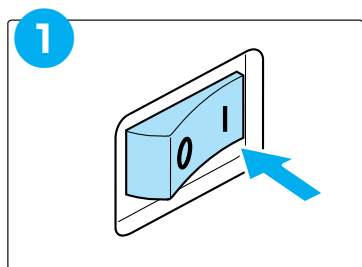
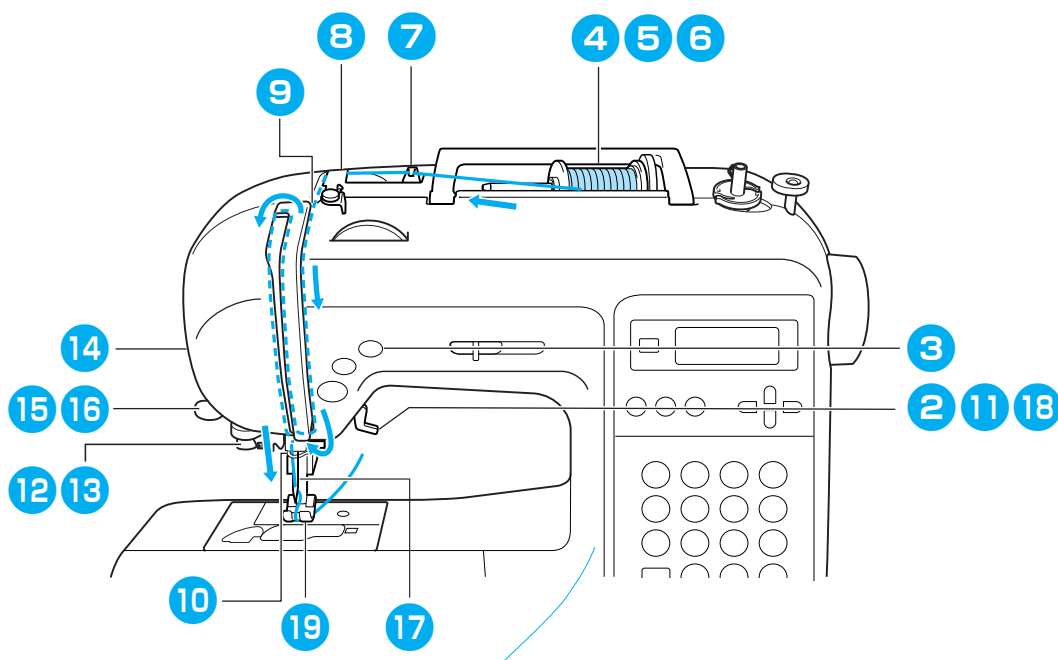


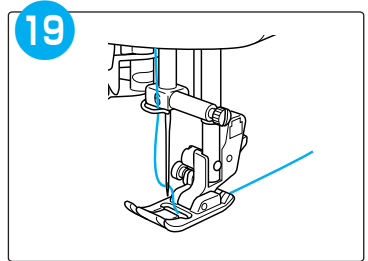
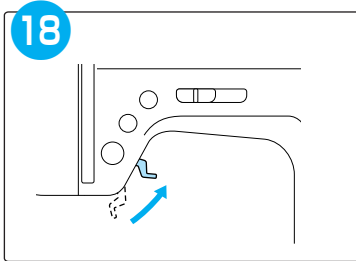
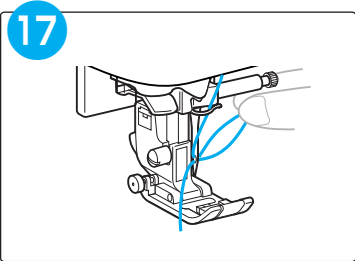
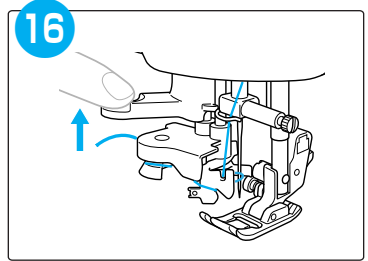
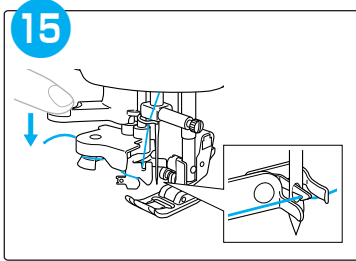
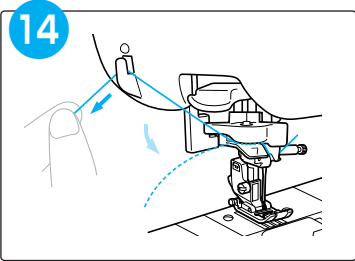
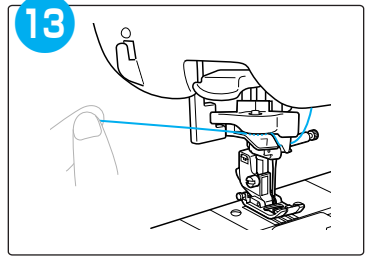
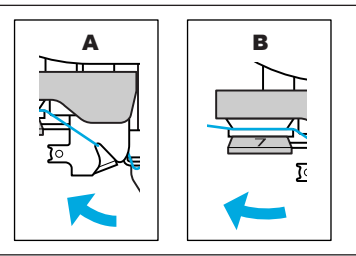
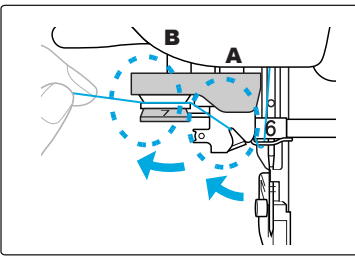
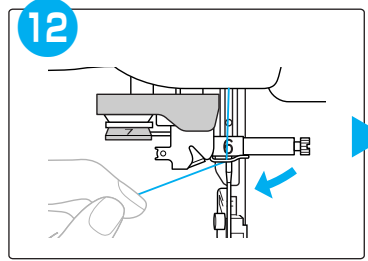
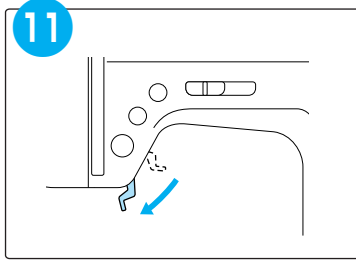
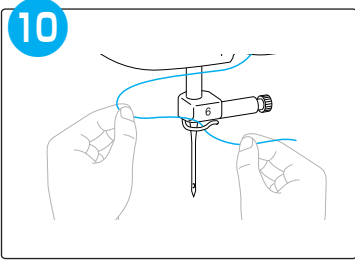
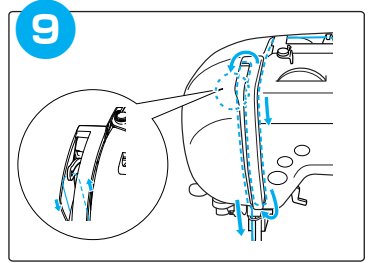
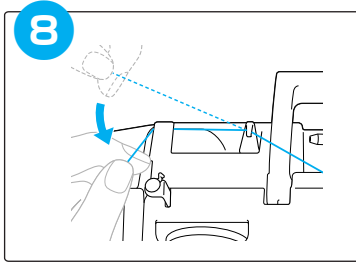
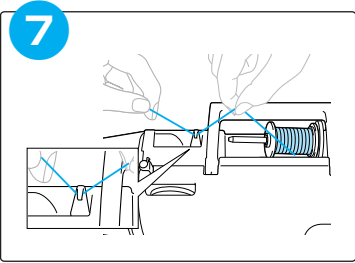


## Upper threading

Einfädeln des Oberfadens  
Bovendraad inrijgen  
Enhebrado del hilo superior  
Trä övertråden  
Ylälangan pujotus

Enfilage supérieur  
Infilatura superiore  
Træ overtråden  
Trædning af overtråd  
Заправка верхней нити





# Selecting stitch patterns

Auswahl von Stichmustern  
 Steekpatronen selecteren  
 Selección de patrones de costura  
 Välja mönster  
 Ompeleen valinta

Sélection des motifs de point  
 Selezione di disegni/punti  
 Velge sømmønster  
 Valg af stingmønstre  
 Выбор рисунков строчек

## Preset utility stitch/ saved pattern

Voreingestellter Nutzstich/  
 Gespeichertes Muster

Préréglage de point de  
 couture courant/motif  
 enregistré

Vooraf ingestelde naaisteek/  
 opgeslagen patroon

Punto utile preimpostato/  
 disegno salvato

Costura con aplicaciones  
 preajustada/patrones  
 guardados

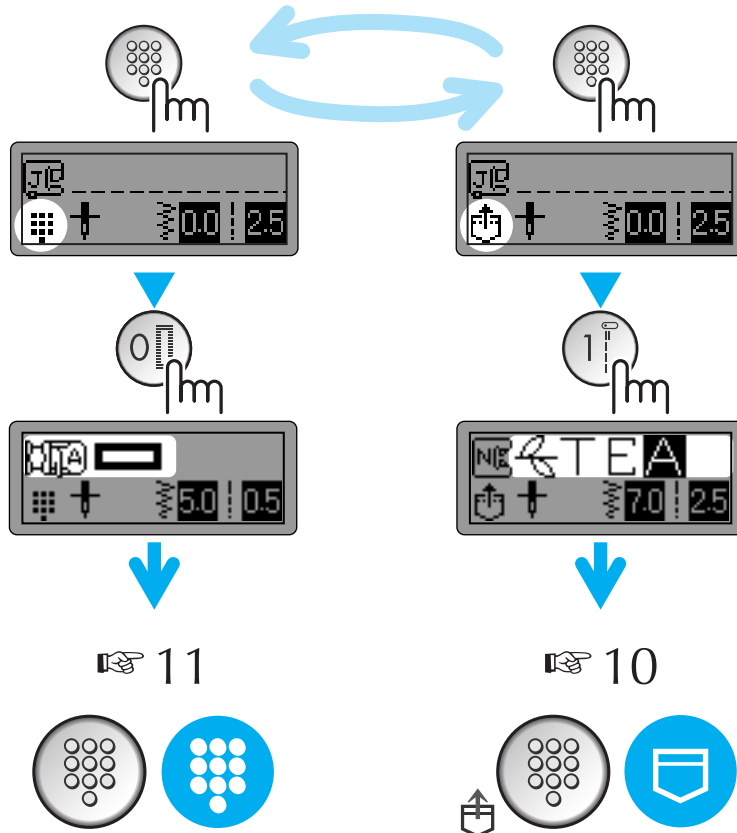
Forhåndsinnstilt nyttesøm/  
 lagret mønster

Förinställd nyttosöm/  
 sparat mönster

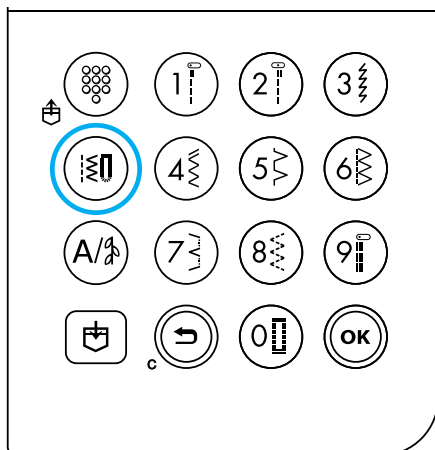
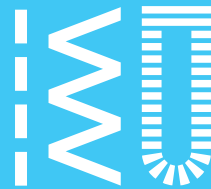
Forindstillede brugssting/  
 gemt mønster

Esiasetettu hyötyommel/  
 tallennettu kuvio

Стандартная обычная строчка /  
 сохраненный рисунок

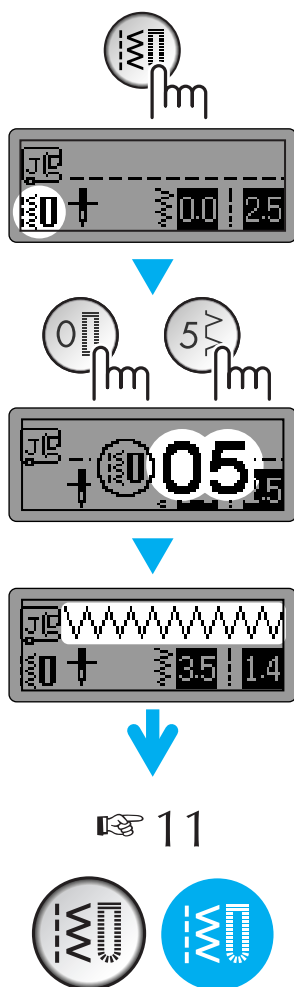






## Utility stitches

Nutzstiche  
Points de couture  
courants  
Naaisteken  
Punti utili  
Puntadas con  
aplicaciones  
Nyttesøm  
Nyttosömmar  
Brugsting  
Hyötyompeleet  
Обычные строчки



# A/g

## Utility decorative stitches

Dekorative Nutzstiche

Points décoratifs courants

Decoratieve naaisteken

Punti utili decorative

Puntadas decorativas utilitarias

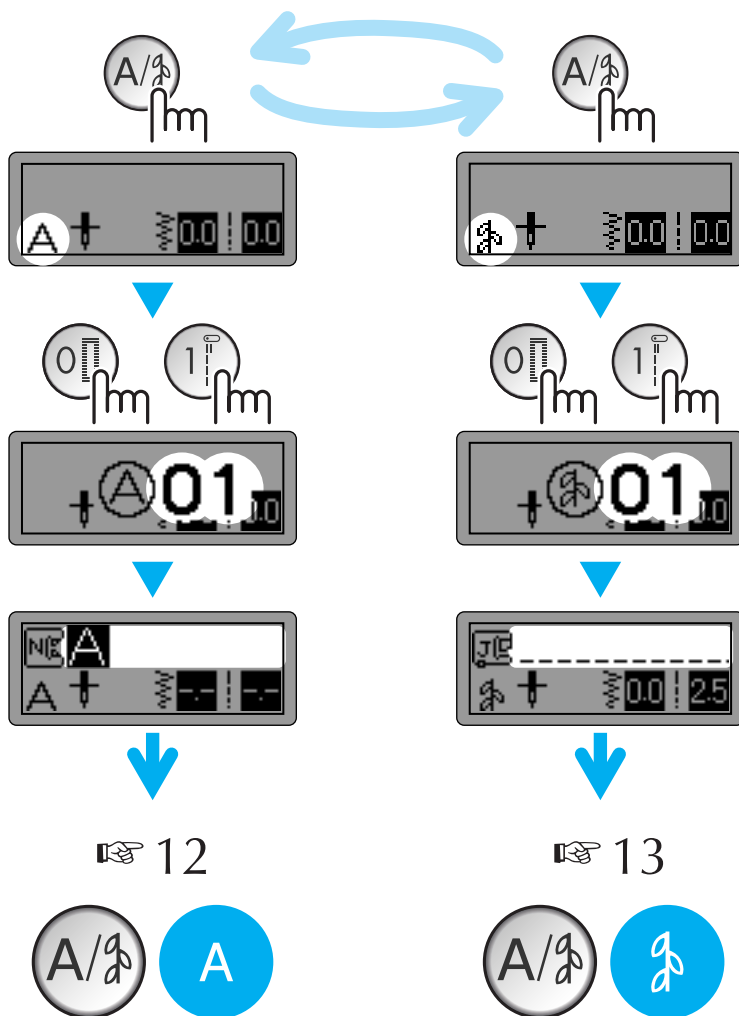
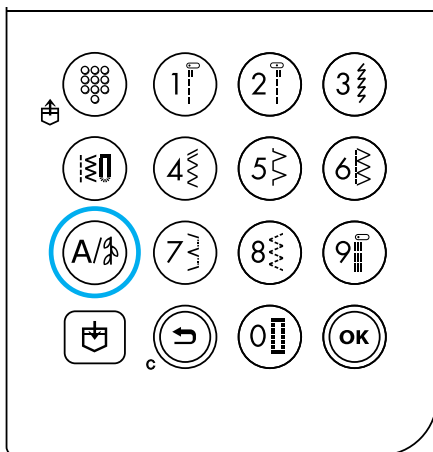
Dekornyttesøm

Dekorative nyttosømmer

Dekorationsbrugssting

Hyötykoristeompeleet

Основные декоративные строчки



# Combining and saving patterns

Kombinieren und Speichern von Mustern  
 Patronen kombinieren en opslaan  
 Combinación y almacenamiento de patrones  
 Kombinera och spara mönster  
 Kuvioiden yhdistely ja tallennus

Combinaison et enregistrement de motifs  
 Combinazione e salvataggio di disegni  
 Kombinere og lagre mønstre  
 Kombinering og lagring af mønstre  
 Сочетание различных рисунков строчек и сохранение в памяти

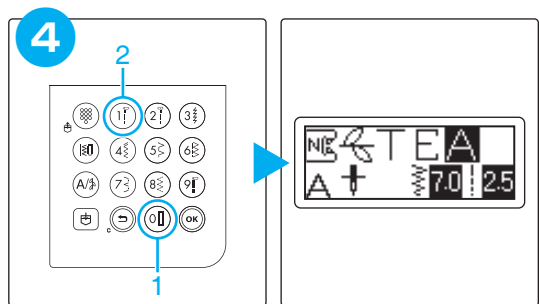
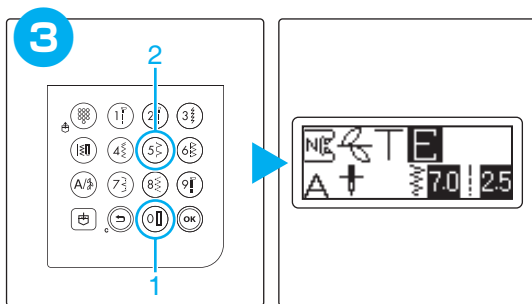
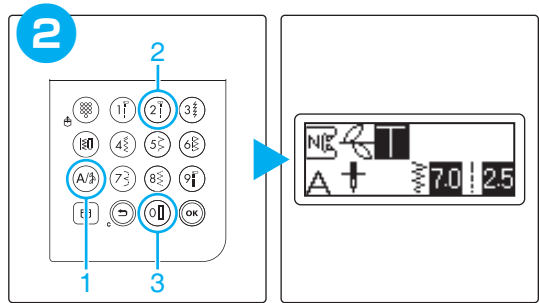
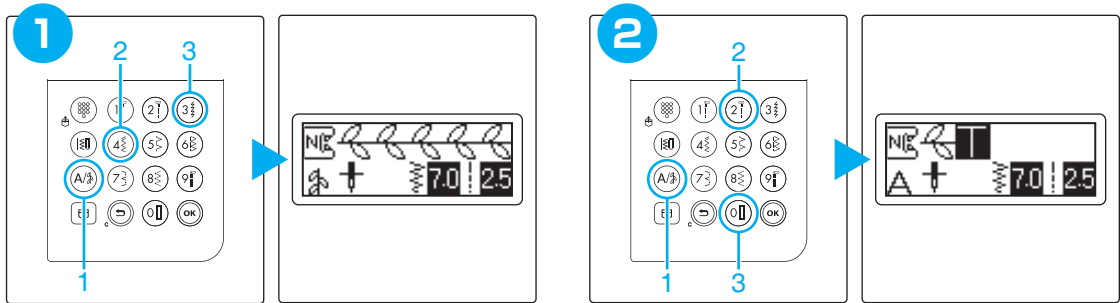


**Example:** Beispiel: Exemple: Voorbeeld: Esempio: Ejemplo: Eksempel: Exempel: Esimerkki: Пример:



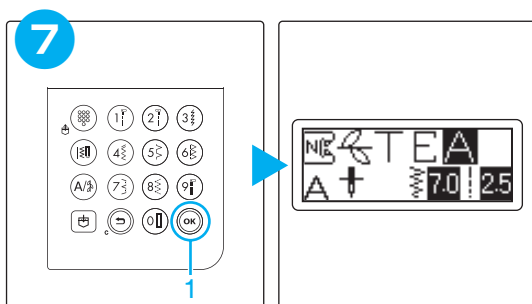
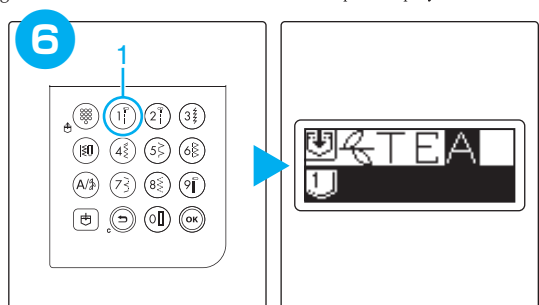
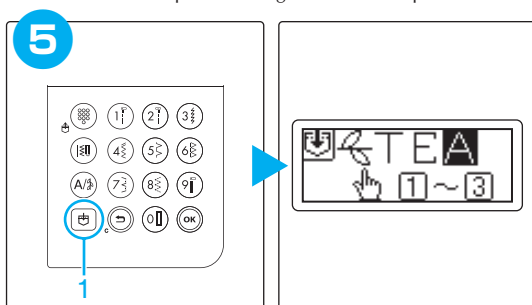
## Combining patterns

Kombinieren von Mustern/ Combinaison de motifs/ Patronen combineren/ Combinazione di disegni/  
 Combinación de patrones/ Kombinere mønstre/ Kombinera mönster/ Kombinering af mønstre/ Kuvioiden yhdistely/Сочетание различных строчек



## Saving patterns

Speichern von Mustern/ Enregistrement des motifs/ Patronen opslaan/ Salvataggio di disegni/  
 Almacenamiento de patrones/ Lagre et mønstre/ Spara mönster/ Sådan gemmes mønstre/ Kuvioiden tallennus/Сохранение рисунков в памяти





# Saved patterns' memo

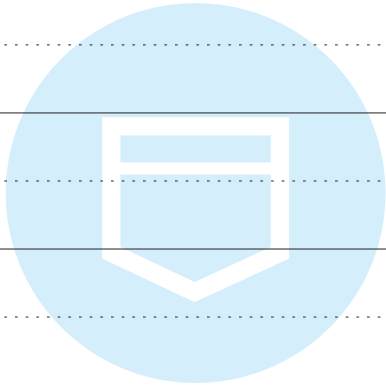
Notizen für gespeicherte Muster  
Opgeslagen patronen  
Memoria de patrones guardados  
Kom ihåg för sparade mönster  
Tallennetut kuviot

Mémo des motifs enregistrés  
Promemoria disegni salvati  
Merknad om lagrede mønstre  
Liste over gemte mønstre  
Памятка для сохраненных рисунков



**Saved patterns** Gespeicherte Muster/ Motifs enregistrés/ Opgeslagen patronen/ Disegni salvati  
Patrones guardados/ Lagrede mønstre/ Sparade mönster/ Gemte mønstre/ Tallennetut kuviot/ Сохраненные рисунки

1	-----
2	-----
3	-----



# Summary of stitch patterns

Übersicht der Stichmuster

Overzicht van steekpatronen

Resumen de patrones de costura

Översikt över mönster

Ompeleiden yhteenveto

Résumé des motifs de point

Riepilogo disegni/punti

Oppsummering av sømmonstre

Översigt over stingmønstre

Рисунки строчек



## Preset utility stitch

Voreingestellter Nutzstich/Préréglage de point de couture courant/

Vooraf ingestelde naaistek/Punto utile preimpostato/Costura con aplicaciones preajustada/Forhåndsinnstilt nyttesøm/

Förinställd nyttesøm/Forindstillede brugssting/Esiasetettu hyötymmel/ Стандартная обычная строчка

1	2	3	4	5	6	7	8	9	0

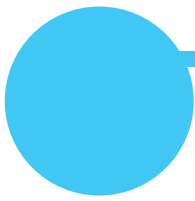


## Utility stitches

Nutzstiche/Points de couture courants/Naaisteken/Punti utili/

Puntadas con aplicaciones/Nyttesøm/Nyttosømmer/Brugssting/Hyötympeleet/ Обычные строчки

00	01	02	03	04	05	06	07	08	09	
10	11	12	13	14	15	16	17	18	19	
20	21	22	23	24	25	26	27	28	29	
30	31	32	33	34	35	36	37	38	39	
40	41	42	43	44	45	46	47	48	49	
50	51	52	53	54	55	56	57	58	59	
60	61	62	63	64	65	66	67	68	69	
70	71	72	73	74	75	76	77	78	79	
80										



### Character stitches

Buchstabenstiche / Points caractères / Lettersteken /  
 Punti caratteri / Puntadas de caracteres / Bokstavsøm / Teckensnittssømmar / Tegnsting /  
 Kirjontaompeleet / Вышивание текста

00	01	02	03	04	05	06	07	08	09
00	01	02	03	04	05	06	07	08	09
01	A	B	C	D	E	F	G	H	I
10	J	K	L	M	N	O	P	Q	R
20	T	U	V	W	X	Y	Z	&	?
30	-	0	1	2	3	4	5	6	7
40	9	'	,	.	(	)	-	Ä	Å
50	Ñ	Ö	Ø	Ç	Ü	β			



**Utility decorative stitches** Dekorative Nutzstiche/ Points décoratifs courants/ Decoratieve naaisteken  
 Punti utili decorative/ Puntadas decorativas utilitarias/ Dekornyttesøm/ Dekorativa nyttoösömmar/  
 Dekorationsbrugssting/ Hyötykoristeompeleet/ Основные декоративные строчки

00	0	1	2	3	4	5	6	7	8	9
0		01	02	03	04	05	06	07	08	09
1	10	11	12	13	14	15	16	17	18	19
2	20	21	22	23	24	25	26	27	28	29
3	30	31	32	33	34	35	36	37	38	39
4	40	41	42	43	44	45	46	47	48	49
5	50	51	52	53	54	55	56	57	58	59
6	60	61	62							

